



GAT MONTHLY MEMBERSHIP PROGRESS REPORT

Results as of: 12/31/2022

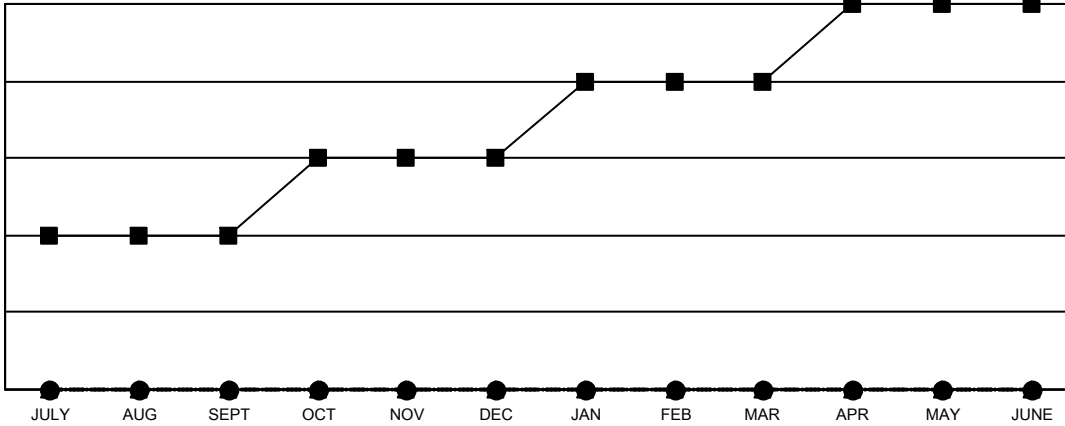
Multiple District 29

LOCATION: WEST VIRGINIA

Clubs			
RESULTS FOR 2022-2023			
QUARTER	NEW CLUB GOAL	NEW CLUBS	DROPPED CLUBS
JULY/AUG/SEPT	2	0	0
OCT/NOV/DEC	1	0	3
JAN/FEB/MAR	1	0	0
APR/MAY/JUNE	1	0	0

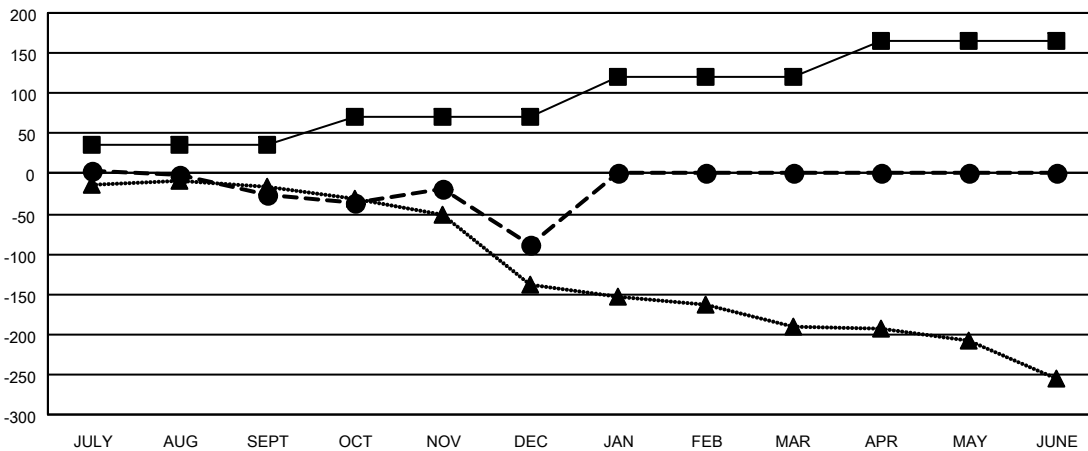
Members			
RESULTS FOR 2022-2023			
QUARTER	MEMBER GROWTH NET GOAL	MEMBER GROWTH ACTUAL	DROPPED MEMBERS ACTUAL (including transfers)
JULY/AUG/SEPT	35	39	56
OCT/NOV/DEC	35	87	145
JAN/FEB/MAR	50	0	0
APR/MAY/JUNE	45	0	0

GOALS AND ACTUAL NEW CLUBS CUMULATIVE



- CURRENT YEAR GOALS FOR NEW CLUBS
- CURRENT YEAR ACTUAL NEW CLUBS
- ▲- LAST YEAR ACTUAL NEW CLUBS

GOALS AND ACTUAL MEMBERS CUMULATIVE



- MEMBER GROWTH NET GOAL
- MEMBER GROWTH ACTUAL
- ▲- LAST YEAR MEMBERSHIP ACTUAL

DROPPED CLUBS: 3	45 CLUBS OF 156 ADDED 1 OR MORE NEW MEMBERS	GENDER DISTRIBUTION
DROPPED MEMBERS	CLICK HERE FOR CUMULATIVE MEMBERSHIP DATA	MALE 2,142 (62.72%)
DECEASED 38		FEMALE 1,273 (37.28%)
CLUB CANCELLED 33		NON BINARY 0 (0.00%)
OTHER 130		PREFER NOT TO ANSWER 0 (0.00%)
TOTAL 201		TOTAL FAMILY UNIT MEMBERS 1,009
		FAMILY MEMBERS PAYING HALF DUES 517